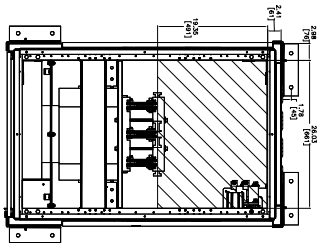
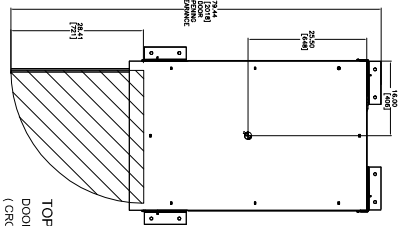


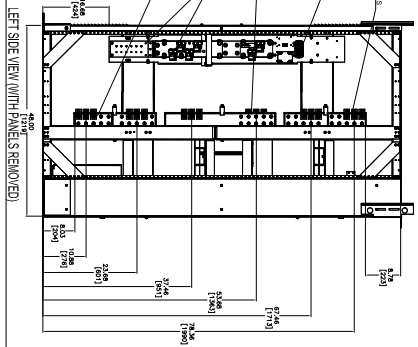
PLAN VIEW  
SEISMIC MOUNTING DIMENSIONS  
FOR 0.2-13 BOLTS (8 REQUIRED)



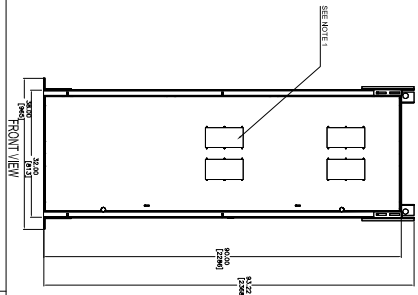
TOP VIEW  
CABLE ENTRY / AREA  
(CROSSHATCHED)



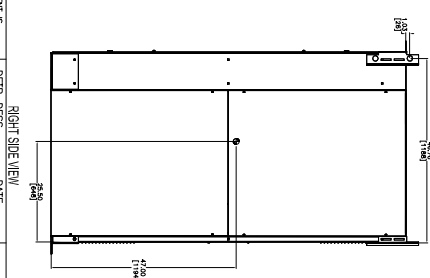
TOP VIEW  
DOOR OPENING AREA  
(CROSSHATCHED)



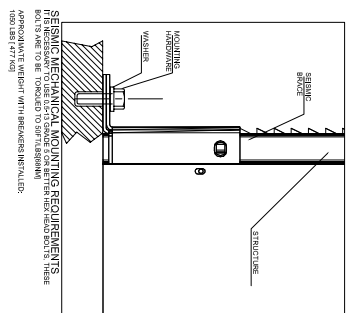
LEFT SIDE VIEW WITH PANELS REMOVED



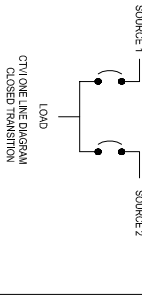
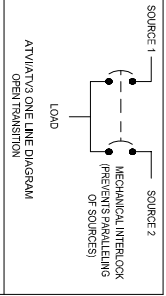
FRONT VIEW



RIGHT SIDE VIEW



SEISMIC MECHANICAL MOUNTING REQUIREMENTS  
BOLTS ARE TO BE TORQUED TO SPECIFICATIONS  
APPROXIMATE WEIGHT WITH BRACKET INSTALLER  
1500 GRAM (0.75 LBS)



- NOTES:
1. AUTOMATIC, NON-AUTOMATIC, AND MANUAL ORDER INFORMATION.
  2. DIMENSIONS IN PARENTHESES (INCHES/MILLIMETERS)
  3.  $\ominus$  = CENTER OF GRAVITY.
  4. INSTALLER TO MOUNT CT ON NEUTRAL LOAD BUS TERMINALS, APPLICABLE TO 4 POLE BUS-TERMINALS WITH X1 TERMINALS FACING THE SWITCHES WITH SECOND POLE (SENSING ONLY)

THE INFORMATION ON THIS DRAWING IS CREATED BY CUTLER-HAMMER. IT IS PROVIDED IN CONFORMANCE AND IS ONE OF THE BEST FOR THE PURPOSE IN WHICH IT IS SUPPLIED. THE USER SHALL BE RESPONSIBLE FOR OBTAINING ALL NECESSARY PERMITS AND APPROVALS FROM LOCAL, STATE, AND FEDERAL AGENCIES FOR CUTLER-HAMMER AS WELL AS FOR THE U.S. VOICES SWITCH TERMINALS.	OTHER DRESS, DATE ANDY F. LI AUGUST 04/04	SCALE / DETAIL N.T.S.	TYPE MOUNTING	PROJECT CODE 230	REVISED I	DATE 04/04	SCALE / DETAIL N.T.S.	TYPE MOUNTING	PROJECT CODE 230
PROJECT CODE 230	DATE 04/04	SCALE / DETAIL N.T.S.	TYPE MOUNTING	PROJECT CODE 230	REVISED I	DATE 04/04	SCALE / DETAIL N.T.S.	TYPE MOUNTING	PROJECT CODE 230
PROJECT CODE 230	DATE 04/04	SCALE / DETAIL N.T.S.	TYPE MOUNTING	PROJECT CODE 230	REVISED I	DATE 04/04	SCALE / DETAIL N.T.S.	TYPE MOUNTING	PROJECT CODE 230

**Cutler-Hammer** BURLINGTON, ON

AN/ANS/CVN 200-2000A 2P & 3P FIXED MOUNT NEMA 1

OUTLINE

CE23452 1 OF 1